

YEAR 9 OPTIONS PROCESS

2022



Life. Changing. Learning.





JUN 26, 1930

JUL 7, 1930

JUL 24, 1930

AUG 18, 1930

SEPT 8, 1930

NOV 10, 1930

Now

Year 10

End of
Year 11

Sixth Form
/ Uni?



life. Changing. Learning.



Life. Changing. Learning.









Manager's Office

erspace: Tablet Art





Career ambitions 'already limited by age of seven'

By Sean Coughlan
BBC News family and education correspondent

🕒 15 October 2019 | 🗨️



🔗 Share

The findings show that in primary school, boys from wealthier homes are more likely to expect to become lawyers or managers while girls from deprived backgrounds are expecting to go into hairdressing or shop work.



Life. Changing. Learning.

BUT



life. Changing. learning.

Warning over youth career aspiration-reality disconnect

By Katherine Sellgren
BBC News education and family reporter

🕒 22 January 2020 | 💬 456



🔗 Share

Do young people realise how hard it is go get into some careers?

by DSHS Student Friendly Headline Generator

22nd January 2020



Life. Changing. Learning.

Warning over youth career aspiration-reality disconnect

By Katherine Sellgren
BBC News education and family reporter

🕒 22 January 2020 | 💬 456



📺 Bloomberg Quicktake  @Quicktake

October 1, 2018

There's a huge gap between millennials' dream job versus reality

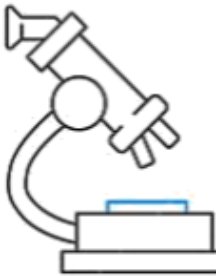
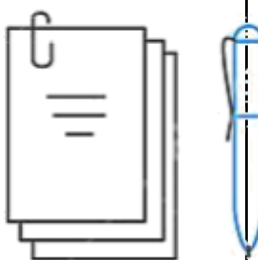


Life. Changing. Learning.

THE OPTIONS PROCESS



Life. Changing. Learning.

		Hours per fortnight					
		Notes	En	Ma	SC	Options (6h each)	Core PE / PSHE
	Specialist Science Pathway	Only for students who have strong attainment in Science (sets D or R and/or MLG of at least a grade 6).	8	8	12 (three GCSES)	Choose <u>three</u> with the expectation that at least one is History / Geography / French / German	4
	General Pathway		8	8	10 (11 in Year 11)	Choose <u>three</u> but at least one <u>must</u> be History / Geography / French / German	6 (5 in Year 11)



SPECIALIST SCIENCE PATHWAY

- More time doing Science
- Maximum of 60 students (unless we get nearer 90)
- Not to be underestimated:
 - Need to have strong grades from



WHAT SHOULD I CHOOSE THEN?



life. Changing. learning.

FIRST THINGS FIRST...

...they are all hard. There is no easy option.



Life. Changing. Learning.

WHAT IS AVAILABLE?

Humanities and Languages	Arts (visual and performing)	Technologies	Others
History	Art	Computer Science	Religious Studies
Geography	Art (Fashion and Textiles)	Creative iMedia	Business Studies
French	Dance	Design and Technology	Child Development
German	Drama	Engineering	Health and Social Care
	Music	Creative Craft	PE / Sports Science
	Music Performance	Food and Nutrition	



KEY ADVICE:

Think with careers in mind but...

Pick what you enjoy and pick what you are good at.



Life. Changing. Learning.

OTHER ADVICE:

- **Don't** choose what your friends are doing – you might not end up in the same group.
- Don't choose a subject because you like a particular teacher; you may not have that teacher in Year 10.
- Don't choose something because it is 'new' without researching what it really is.



TIMELINE

- Year 9 Parents' Evening is Thursday 3rd February.
- Launch assembly – Tuesday 8th February
- Options Evening – Thursday 10th February.
- Deadline for students making choices is Wednesday 16th February (via the DSHS Launchpad)



Smart Choices

Reasons to Choose Subjects

- You enjoy the subject and don't mind working hard to do well in it
- You know or you think you will be good at the subject
- The subject combination may link to future career ideas
- The subject interests you
- It suits your preferences for exams/coursework

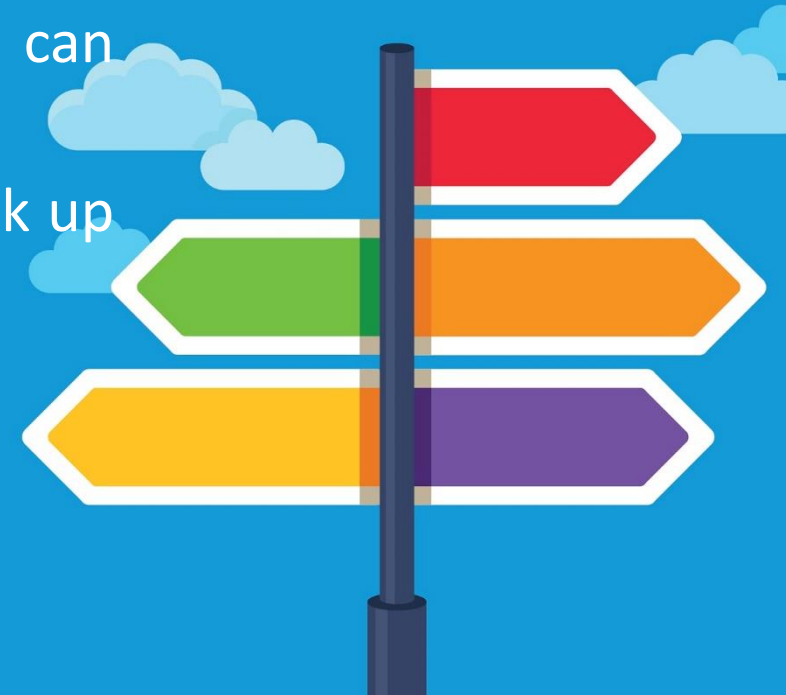


Subjects and Related Careers

Very few career routes require specific GCSE subjects.

For a few degrees, apprenticeships and A Levels, you will be expected to have taken specific GCSE subjects, for example:

- Medicine [all areas] and veterinary sciences – separate science is the ‘regular’ route but not essential.
- Art and design pathways – a portfolio is essential (and can be part-curated using work from a GCSE course)
- Language based routes – it would not be possible to pick up a language at A level if it hasn’t been studied for GCSE.



Need More Advice?

- Use our website: <https://website.droitwichspahigh.worcs.sch.uk/index.php/student-development-and-support/careers/>
- Discuss your options with Lindsay, our Independent Careers Adviser in school. You can reach her at: group-careers@droitwichspahigh.worcs.sch.uk
- Talk to your subject teachers
- Talk to your tutor - we are still on the other end of an email
- Contact an adviser from the National Careers Service FREE
 - on 0800 100 900
- Talk to your parents or carers

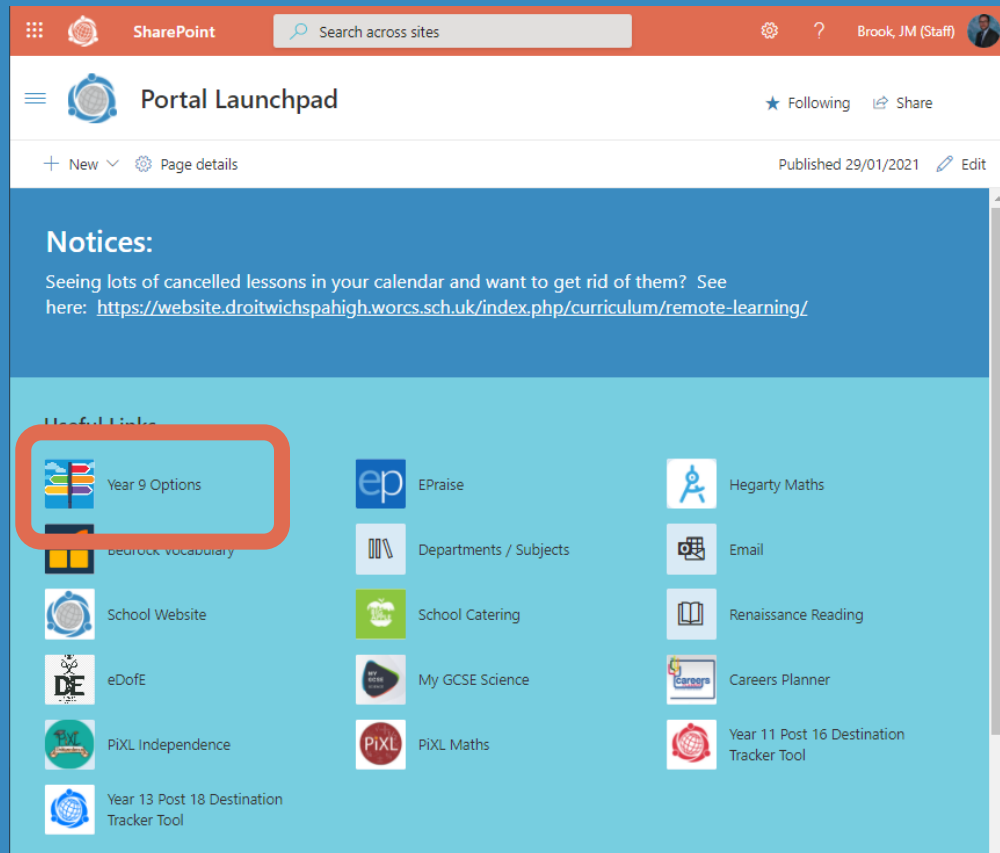


FAQs

- Will all students get all their choices?
 - Reserve choice
- What happens if I change my mind?



MAKING YOUR CHOICES



NB:
Pay attention
to order of
preference of
choices.



Life. Changing. Learning.