



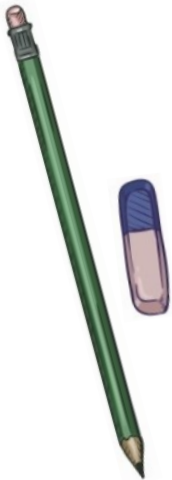
SCHOOL UNIFORM AND EQUIPMENT

2022 - 2023

BASIC EQUIPMENT



What are the seven basic pieces of school equipment you must carry?



PEN AND A SPARE
PENCIL AND A SPARE
RUBBER
RULER
CALCULATOR
SCHOOL BAG



PENCIL CASE (CLEAR ONE FOR EXAMS)

You can buy spare equipment from the Learning Resource Centre (LRC)



UNIFORM AND DRESS CODE 2022/23

We wish to make clear to all students and parents that the following list of uniform items is intended to be exactly that – uniform.

JEWELLERY

There are restrictions on **jewellery**.

Students are only allowed:

- one discreet necklace or bracelet
- one small signet ring
- one plain stud or small sleeper in the lower part of each i.e. the ear lobe.

It is expected that all jewellery is removed for practical lessons.

No other **piercings**, **ear stretchers** or jewellery are allowed.

Acceptable



One item ✓
Small ring ✓



One item ✓
Discreet ✓



One item ✓
Plain stud ✓
Ear lobe ✓

Unacceptable



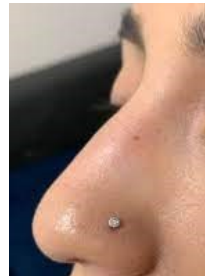
One item ✓
Plain stud x
Ear lobe ✓



One item x
Plain stud ✓
Ear lobe ✓



One item ✓
Plain stud x
Ear lobe x



One item ✓
Plain stud ✓
Ear lobe x

UNIFORM AND DRESS CODE 2022/23

HAIRSTYLES

Hairstyles should be appropriate for studying in school, without extremes of style, cut or colour.

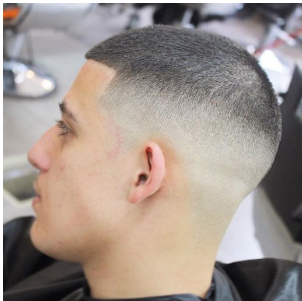
We are mindful of changes in fashion but a “Number 1” haircut or shorter is not acceptable.

Styles where lines or shapes are cut into the hair, or where parts of the head are shaved are not acceptable.

Hair which has been dyed or streaked with unnatural colours (where there are two or more distinct colours that form an obvious contrast) is not permitted.

Long hair in boys or girls needs to be tied or clipped back so that teachers can see students’ faces.

Unacceptable



Number 1 x



Lines shaved in head x



Unnatural colour x
Contrasting colours x



Extremes of length x



Extremes of length x



Hair over face x

UNIFORM AND DRESS CODE 2022/23

MAKE UP

Discreet **make up** is permitted.

Light foundation and a small amount of mascara are allowed. Make up should not exaggerate features e.g. eyebrows and excessive/obvious contouring.

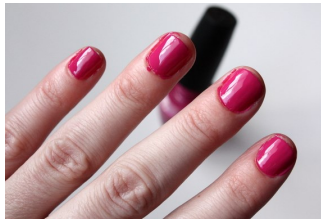
Nail varnish, nail extensions, false nails and false eyelashes are not allowed.

Only modest use of fake tanning products is acceptable.

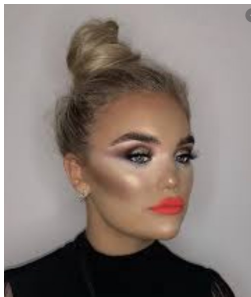
Unacceptable



Fake eyelashes x



Nail varnish
(other than clear) x



Fake eyelashes x
Exaggerate features x



False nails / nail extensions x



Obvious / over the top fake tan x

UNIFORM AND DRESS CODE 2022/23

OUTDOOR CLOTHING

Anything made from sweatshirt material (regardless of whether or not it has a zip) and tracksuit style tops **may not be used as a substitute for a coat** and will be confiscated if used in school (including in between school buildings).

For **new Year 8s** in September 2021 **outdoor coats** (if worn) must be ALL navy blue or ALL black. Visible branding is acceptable as long as it is discreet.

Hats should not be worn in school buildings. **Scarves** (if worn) must be plain and either black or navy blue. Football or fashion scarves are not allowed.

Acceptable (for new Year 8)



All navy blue or all black ✓
Not sweatshirt material / tracksuit ✓



All navy blue or all black ✓
Not sweatshirt material / tracksuit ✓

Unacceptable (for new Year 8)



All navy blue or all black x
Not sweatshirt material / tracksuit ✓



All navy blue or all black x
Not sweatshirt material / tracksuit ✓

UNIFORM AND DRESS CODE 2022/23

Unacceptable for all year groups



Not sweatshirt material / tracksuit x



Not sweatshirt material / tracksuit x



Not sweatshirt material / tracksuit x



Not sweatshirt material / tracksuit x

GIRLS' UNIFORM

Sky blue blouse with open neck reverse collar (with which no tie is necessary).

Black school blazer with school badge and pocket trims embroidered in house colour



Black pleated skirt, which must be no shorter than just above the knee.

OR

Black conventional school type trousers (not pictured)

Jeans are not allowed. Leggings are not allowed. Very tight trousers, especially stretchy ones, are not allowed.

Optional:
Black V-neck jumper with school badge embroidered (not pictured)

No other jumpers, hoodies or cardigans are allowed.

Black leather or faux leather shoes. **Plain all-black** shoes made by sports brands are OK. Canvas shoes/pumps and are not allowed. Ankle (or higher) boots are not allowed. High heeled shoes are not allowed.

Navy blue, dark grey or black below the knee socks
OR
un-patterned black or natural tights.

KEY:

Available from ACE Essentials, School Togs and other high street retailers

Available from ACE Essentials or School Togs

Available from ACE Essentials ONLY

GIRLS' PE UNIFORM

Compulsory:
Black polo shirt with
school badge
embroidered in
house colour



Hoodies are *not*
compulsory but if
you have one it must
be as pictured with
the school badge.

No other hoodies or
jumpers are allowed
for PE or in school*

White ankle or trainer
socks

Trainers (no black
soles)

Gym leggings with
house colour flash at
bottom of leg

Black and red skort

Any one (or more)
of these items are
acceptable

* trip / club hoodies not allowed
to be worn as school uniform



Plain black shorts (not
pictured). For more
detail see the boys'
page.

Plain all black full length
gym sports leggings.
NB: Thin fashion
leggings are not
acceptable. Absolutely
no other colours
allowed except as
below:

Plain black tapered
tracksuit bottoms (not
pictured). For more
detail see the boys'
page.

Any visible branding **MUST** fit within **one single 30cm²**
area. This includes branding that is black / woven into
the fabric. The area can be any permutation e.g. 3cm x
10cm or 6cm x 5cm etc. See following page for more info.

BOYS' UNIFORM



Blue striped clip-on school tie

Sky blue conventional style school shirt (long or short sleeves).

Black conventional school type trousers.

Jeans are not allowed. Very tight trousers and jogging bottoms are not allowed.

Black leather or faux leather shoes. Plain all-black shoes made by sports brands are OK. Canvas shoes/pumps and ankle (or higher) boots are not allowed. High heeled shoes are not allowed.

Black school blazer with school badge and pocket trims embroidered in house colour



Optional
Black V-neck jumper with school badge embroidered (not pictured).

No other jumpers, hoodies or cardigans are allowed.

Navy blue, dark grey or black socks.

KEY:

Available from ACE Essentials, School Togs and other high street retailers

Available from ACE Essentials or School Togs

Available from ACE Essentials ONLY

BOYS' PE UNIFORM

Compulsory:
Black polo shirt
with school badge



Hoodies are *not* compulsory but if you have one it must be as pictured with the school badge.

No other hoodies or jumpers are allowed for PE or in school*

White ankle or trainer socks

Trainers (no black soles)

Plain black shorts with school logo

OR

Plain all black shorts. Absolutely no other colours allowed except as below:

OR

Plain all black tapered tracksuit bottoms. NB: baggy legs and/or low crotch 'lounger' pants are **not** acceptable. Absolutely no other colours allowed except as below:

Any visible branding **MUST** fit within one single 30cm² area. This includes branding that is black / woven into the fabric. The area can be any permutation e.g. 3cm x 10cm or 6cm x 5cm etc. See following page for more info.

* trip / club hoodies not allowed to be worn as school uniform

EXAMPLES OF ACCEPTABLE ITEMS FROM HIGH STREET RETAILERS

Girls' school trousers



Black ✓
School type ✓
(those to the left are from M&S and are described as 'skinny leg' but the fabric is not stretchy)

School shoes



All black ✓
(Faux) leather ✓



All black ✓
(Faux) leather ✓



All black ✓
(Faux) leather ✓



All black ✓
(Faux) leather ✓



All black ✓
(Faux) leather ✓



All black ✓
(Faux) leather ✓

EXAMPLES OF UNACCEPTABLE ITEMS FROM HIGH STREET RETAILERS

Girls' school trousers



Black
School type
(too tight / stretchy material)

✓
x

School shoes



All black
(Faux) leather

x
✓

All black
(Faux) leather
Flat
(shoes with a heel are NOT allowed)



✓
✓
x

All black
(Faux) leather
(canvas shoes are NOT allowed)

✓
x



All black
(Faux) leather

x
✓



All black
(Faux) leather
Shoe

(high tops / boots are NOT allowed)

✓
✓
x

EXAMPLES OF ACCEPTABLE PE ITEMS FROM HIGH STREET RETAILERS

Tracksuit bottoms (boys and girls)



Branding within 30cm2 ✓
All black material ✓
Sports fit ✓



Branding within 30cm2 ✓
All black material ✓
Sports fit ✓



Branding within 30cm2 ✓
All black material ✓
Sports fit ✓

Shorts (boys and girls)



Branding within 30cm2 ✓
All black material ✓



Branding within 30cm2 ✓
All black material ✓



Branding within 30cm2 ✓
All black material ✓

EXAMPLES OF UNACCEPTABLE PE ITEMS FROM HIGH STREET RETAILERS

Tracksuit bottoms (boys and girls)



Branding within 30cm2
All black material ✓
Sports fit ✓



x Branding within 30cm2
All black material
Sports fit



✓ Branding within 30cm2
x All black material
✓ Sports fit
x

Shorts (boys and girls)



Branding within 30cm2 x
All black material ✓



Branding within 30cm2 x
All black material



Branding within 30cm2 x
(the three stripes up the leg are black but greater than 30cm2)
All black material ✓

EXAMPLES OF ACCEPTABLE PE ITEMS FROM HIGH STREET RETAILERS

Gym leggings (girls)



All black material ✓
Branding within 30cm2 ✓



All black material ✓
Branding within 30cm2 ✓



All black material ✓
Branding within 30cm2 ✓

Shorts (girls)



All black material ✓
Branding within 30cm2 ✓



All black material ✓
(these 2 in 1 shorts are fine but the shorts don't have to be 2 in 1)
Branding within 30cm2 ✓



All black material ✓
Branding within 30cm2 ✓

EXAMPLES OF UNACCEPTABLE PE ITEMS FROM HIGH STREET RETAILERS

Gym leggings (girls)



All black material ✓
Branding within 30cm2 x
Single area of branding x



All black material (see through panels are not OK) x
Branding within 30cm2 ✓



All black material x
Branding within 30cm2 ✓



All black material ✓
Branding within 30cm2 x



All black material ✓
Branding within 30cm2 ✓
Full length x



All black material ✓
Branding within 30cm2 x
Full length x



