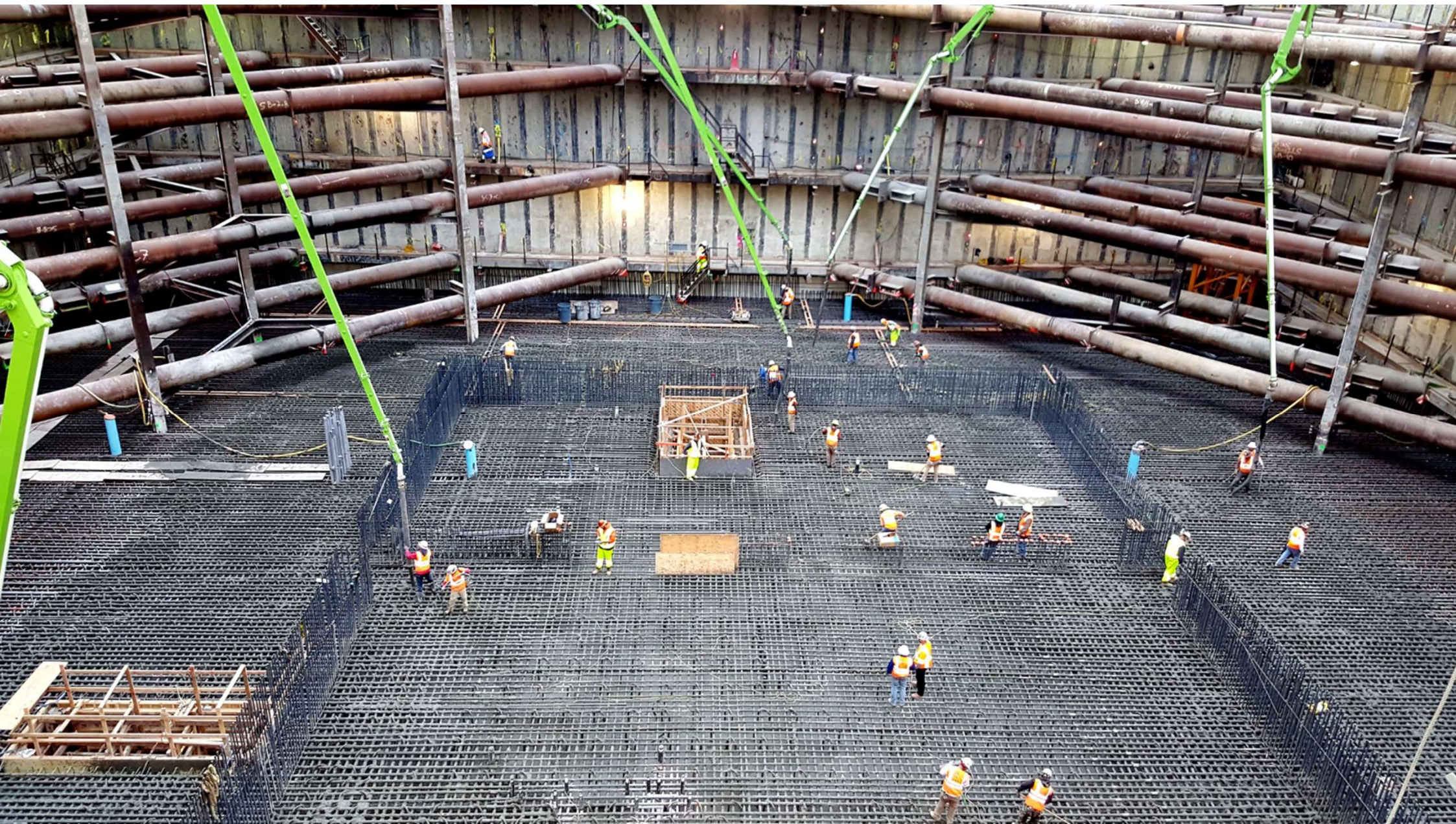


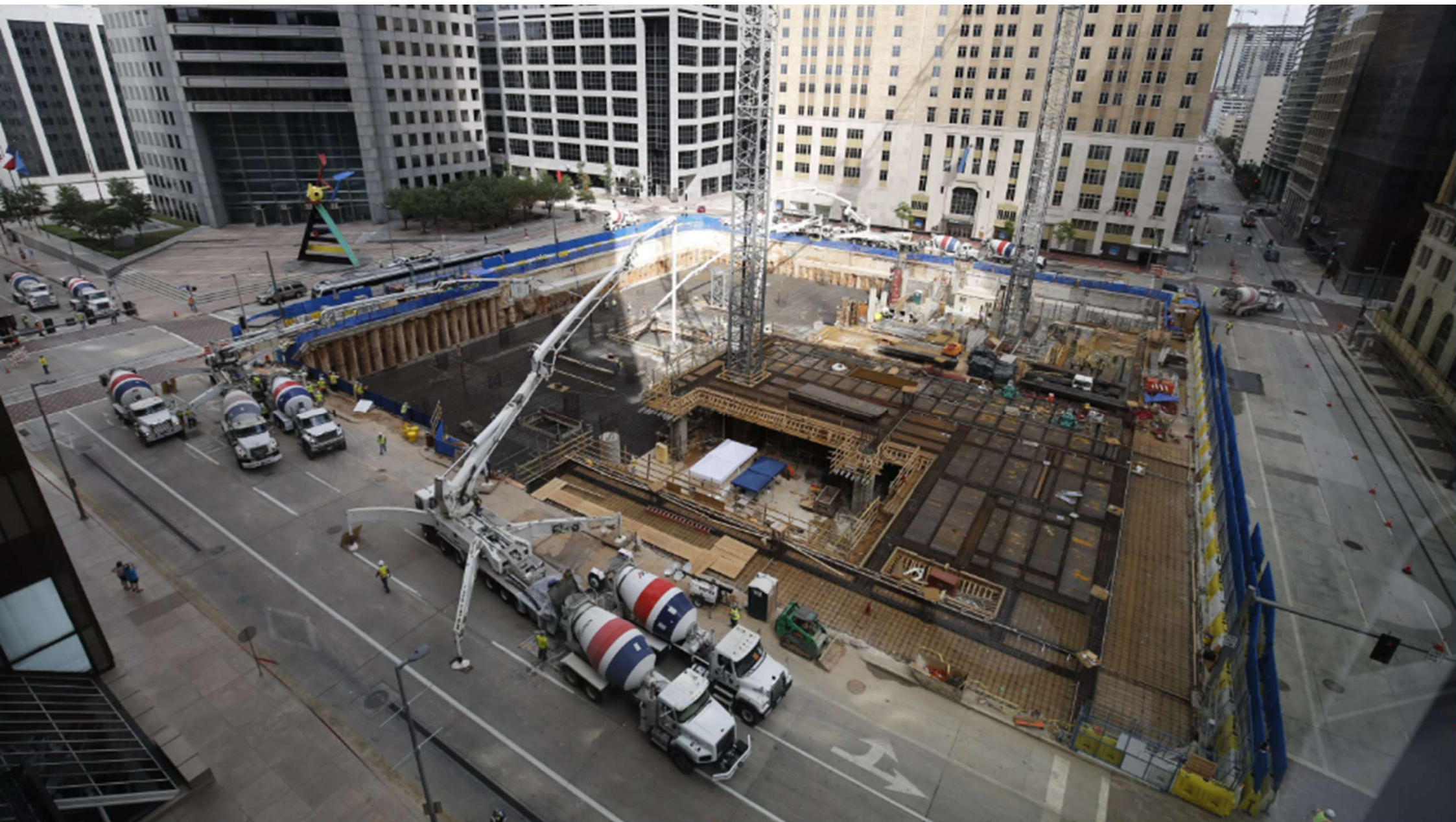
YEAR 9 OPTIONS PROCESS

2024



Life. Changing. Learning.





JUN 26, 1930

JUL 7, 1930

JUL 24, 1930

AUG 18, 1930

SEPT 8, 1930

NOV 10, 1930

Now

Year 10

**End of
Year 11**

**Sixth Form
/ Uni?**



Life. Changing. Learning.

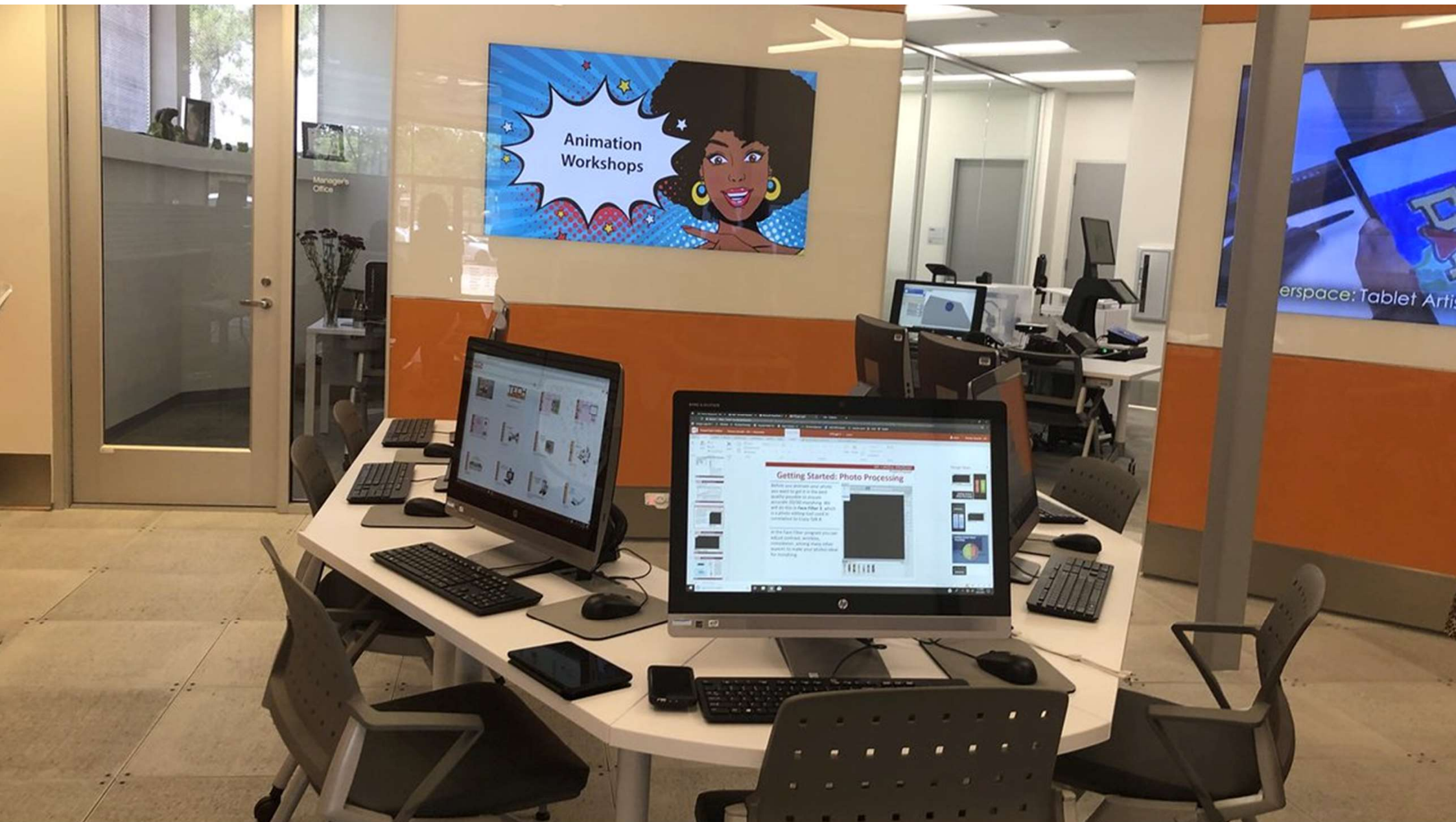


Life. Changing. Learning.











Career ambitions 'already limited by age of seven'

By Sean Coughlan
BBC News family and education correspondent

🕒 15 October 2019 | 🗨️



🔗 Share

The findings show that in primary school, boys from wealthier homes are more likely to expect to become lawyers or managers while girls from deprived backgrounds are expecting to go into hairdressing or shop work.



Life. Changing. Learning.

BUT



Life. Changing. Learning.

Warning over youth career aspiration-reality disconnect

By Katherine Sellgren
BBC News education and family reporter

🕒 22 January 2020 | 💬 456



📺 Bloomberg Quicktake ✓ @Quicktake

October 1, 2018

There's a huge gap between millennials' dream job versus reality



Life. Changing. Learning.

THE OPTIONS PROCESS



Life. Changing. Learning.

| THE NEXT TWO YEARS | Hours per fortnight in Year 10 | Hours per fortnight in Year 11 |
|---|--------------------------------|--------------------------------|
| English Language and Literature (two separate qualifications, worth a total of two GCSEs) | 8 | 8 |
| Maths | 8 | 8 |
| Science (Students may opt for Separate Science see below) | 10 | 11 |
| Core PE/ Philosophy & Ethics /PSHE (Students may opt for GCSE Religious Studies see below) | 4 | 3 |



WHAT IS AVAILABLE?

Students will select 4 options and 1 reserve from the lists below. At least one choice must be from humanities and languages list.

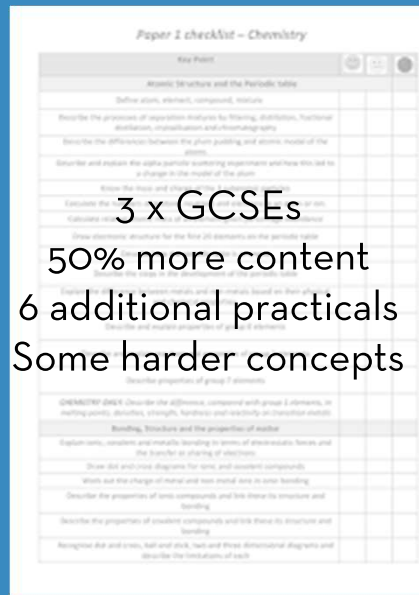
| Humanities and Languages | Arts (visual and performing) | Technologies | Others |
|--------------------------|---------------------------------------|-----------------------|----------------------------|
| History | Art | Computer Science | Religious Studies |
| Geography | Dance | Creative iMedia | Business Studies/Economics |
| French | Drama | Design and Technology | Child Development |
| German | Music | Engineering | Health and Social Care |
| | Performing Arts (VQ) Music Pathway | Food and Nutrition | PE / Sports Science |
| | | | Separate Science |



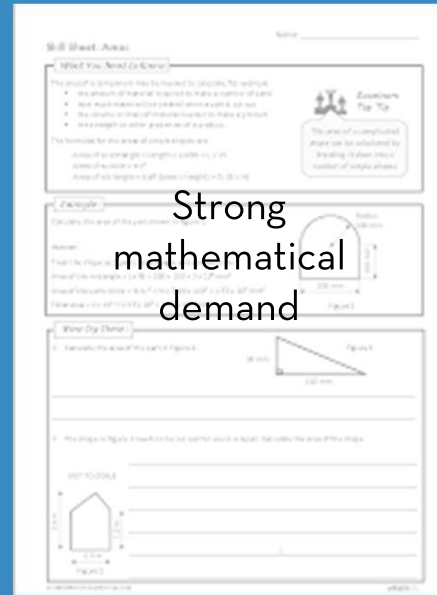
Life. Changing. Learning.

SEPARATE SCIENCE / COMPUTER SCIENCE ENGINEERING

- Not to be underestimated
- Need to have strong grades



3 x GCSEs
50% more content
6 additional practicals
Some harder concepts



Strong mathematical demand

Learners take Component 3C and Component 3E to be awarded the OCR GCSE (9-1) in Computer Science.

| Content Overview | Assessment Overview | |
|---|---|---|
| Computer systems | Computer systems | 50% of total GCSE |
| <ul style="list-style-type: none"> Systems Architecture Memory Storage Wired and wireless networks Network topologies, protocols Computer security and environmental issues | 80 marks 3 hours and 30 minutes (no calculator allowed) | |
| Computational thinking, algorithms and programming | Computational thinking, algorithms and programming | 50% of total GCSE |
| <ul style="list-style-type: none"> Algorithms Programming techniques Logic and algorithms Programming languages Data representation | 80 marks 3 hours and 30 minutes (no calculator allowed) | |
| Programming Project | 30 timetabled hours | Special requirement |
| <ul style="list-style-type: none"> Programming techniques Analysis Design Development Testing and evaluation and conclusions | | Consideration of the learning across the specification through practical activity |

High computational demand.
How computers work.
Programming.
Data handling in applications.



Life. Changing. Learning.

PE GCSE / SPORT SCIENCE



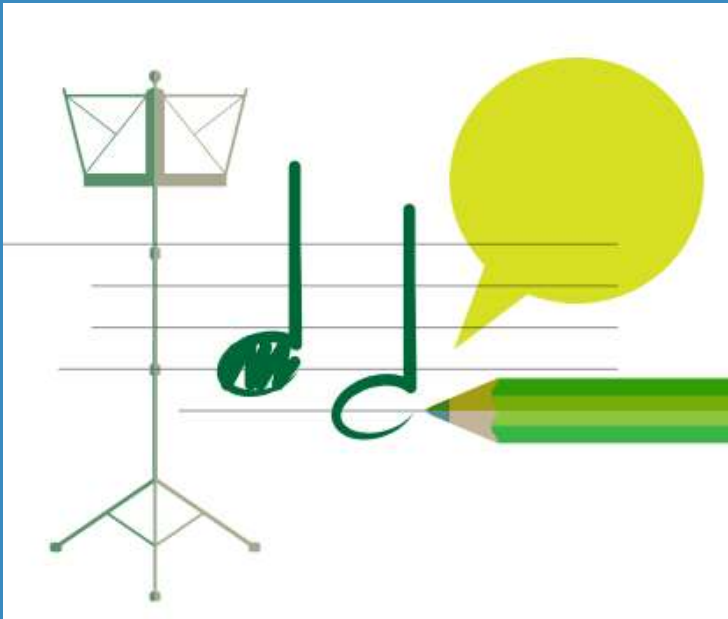
PE GCSE - 40% practical assessment from 3 sports which are equally weighted.

Complex anatomy & physiology.



Life. Changing. Learning.

MUSIC / PERFORMING ARTS (VQ) MUSIC



There are usually three main areas of study: Performance, Composition, Listening and Appraising. Students will learn about a range of types of music, including vocal, instrumental, music for film, pop, jazz, fusion, and new music.



WHAT SHOULD I CHOOSE THEN?



Life. Changing. Learning.

FIRST THINGS FIRST...

...they are all challenging. There is no easy option.



Life. Changing. Learning.

KEY ADVICE:

Think with careers in mind but...

Pick what *you enjoy* and pick what you
are good at.



Life. Changing. Learning.

OTHER ADVICE:

- Don't choose what your friends are doing – you might not end up in the same group.
- Don't choose a subject because you like a particular teacher; you may not have that teacher in Year 10.
- Don't choose something because it is 'new' without researching what it really is.



TIMELINE

- Launch assembly for Year 9 students – Tuesday, 20th February.
- Year 9 Guided Choices Evening - Thursday 22nd February.
- Options form will open – Monday, 26th February.
- Deadline for students making choices – Friday, 15th March.



Smart Choices

Reasons to Choose Subjects

- You enjoy the subject and don't mind working hard to do well in it
- You know or you think you will be good at the subject
- The subject combination may link to future career ideas
- The subject interests you
- It suits your preferences for exams/coursework



Subjects and Related Careers

Very few career routes require specific GCSE subjects.

For a few degrees, apprenticeships and A Levels, you will be expected to have taken specific GCSE subjects, for example:

- **Medicine [all areas] and veterinary sciences** - separate science is the 'regular' route but not essential.
- **Art and design pathways** - a portfolio is essential (and can be part-curated using work from a GCSE course)
- **Language based routes** - it would not be possible to pick up a language at A level if it hasn't been studied for GCSE.



Need More Advice?

- Use our website: <https://website.droitwichspahigh.worcs.sch.uk/index.php/student-development-and-support/careers/>
- Discuss your options with Lindsay, our Independent Careers Adviser in school. You can reach her at: group-careers@droitwichspahigh.worcs.sch.uk
- Talk to your subject teachers
- Talk to your tutor - we are still on the other end of an email
- Contact an adviser from the National Careers Service FREE
 - on 0800 100 900
- Talk to your parents or carers



FAQs

- Will all students get all their choices?

Reserve choice in place of 4th choice.

- What happens if I change my mind?

Email Mr Hayman who will reset the form.

The sooner you change your mind easier to accommodate.

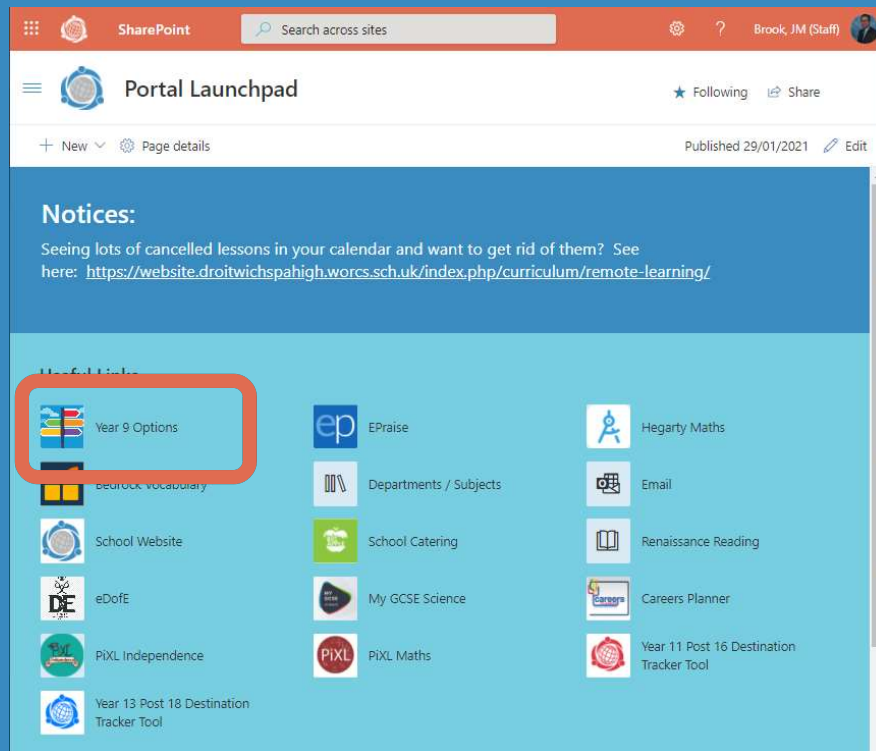
- How will I support my SEND student?

Encourage them to make their choices in preference order.

Mr Hall/Mrs Moss will be in touch to discuss.



MAKING YOUR CHOICES



NB:
Pay attention
to order of
preference of
choices.



Life. Changing. Learning.